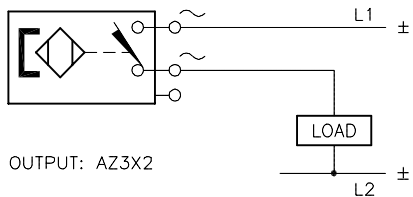


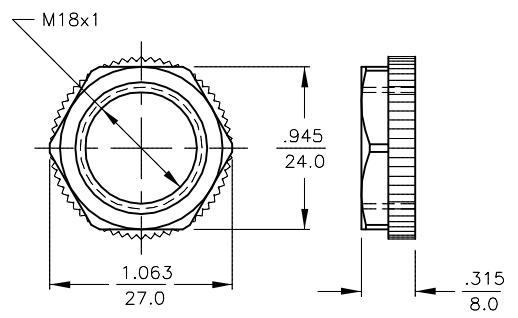
WIRING DIAGRAM



OUTPUT: AZ3X2

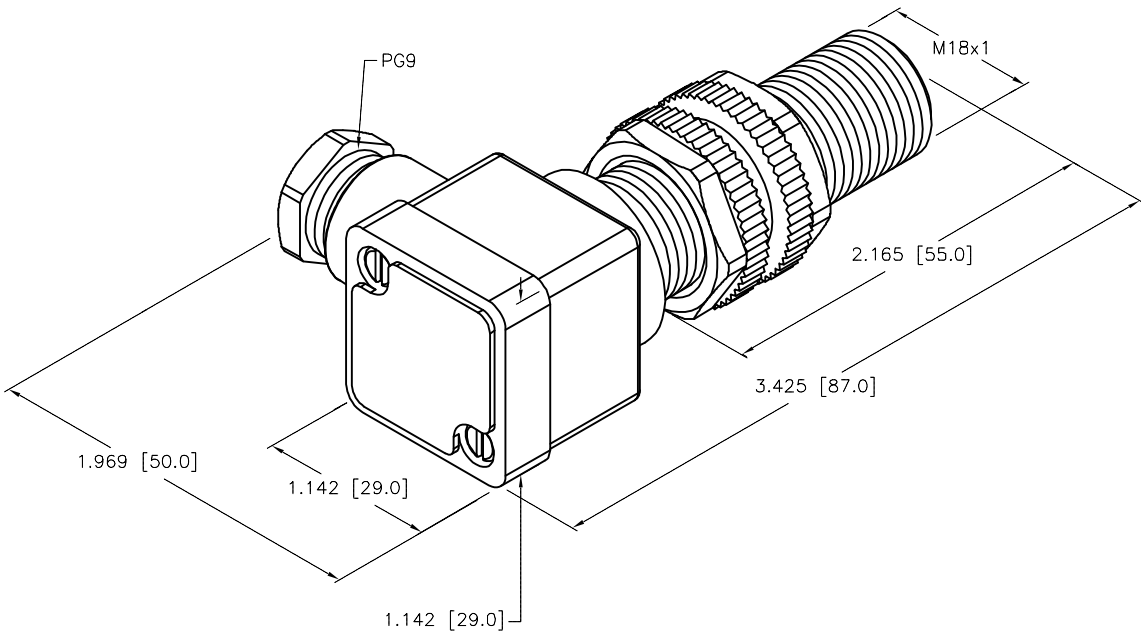
WARNING: NO SHORT-CIRCUIT PROTECTION ALWAYS WIRE A LOAD IN SERIES WITH THE SENSOR.

LOCKNUT LN-P18



SPECIFICATIONS

RATED OPERATING DISTANCE	10mm [.394]
MOUNTING MODE	NON-FLUSH
TEMPERATURE DRIFT	≤ ± 10%
HYSTERSIS	3-15%
MIN. REPEAT ACCURACY	≤ 2%
OPERATING TEMPERATURE	-25°C to +70°C (-13°F to +158°F)
OPERATING VOLTAGE	20-250 VAC/10-300 VDC
CONTINUOUS LOAD CURRENT	≤ 400 mA AC/≤ 300 mA DC
FREQUENCY	50-60 Hz
RESIDUAL CURRENT	≤ 1.7 mA
RATED INSULATION VOLTAGE	≤ 1.5 kV
SMALLEST OPERATING CURRENT	≥ 3.0 mA
SURGE CURRENT	≤ 8 A (≤ 10 ms/5 Hz)
MAX. VOLTAGE DROP	≤ 6.0 V
OUTPUT FUNCTION	NORMALLY OPEN, 2-WIRE
SWITCHING FREQUENCY	≤ 0.02 kHz
HOUSING MATERIAL	PLASTIC, PA
TERMINAL CHAMBER COVER MATERIAL	PLASTIC, ULTEM
TERMINAL CHAMBER HOUSING MATERIAL	PLASTIC, PA12-GF20
ACTIVE FACE MATERIAL	PLASTIC, PA
CONNECTION	TERMINAL CHAMBER
VIBRATION RESISTANCE	55 Hz (IN ALL 3 PLANES)
SHOCK RESISTANCE	30 g, 11 ms
PROTECTION DEGREE	IP67
SWITCHING STATUS INDICATION	LED; RED



SOURCE DRAWING - FOR REFERENCE ONLY

RELATED DOCUMENTS 1. 2. 3. 4.	3RD ANGLE PROJECTION 	THIS DRAWING IS CONFIDENTIAL AND THE PROPERTY OF TURCK INC. USE OF THIS DOCUMENT WITHOUT WRITTEN PERMISSION IS PROHIBITED.	3000 CAMPUS DRIVE MINNEAPOLIS, MN 55441 1-800-544-7769 (763) 553-7300 (763) 553-0708 fax turck.com	
	MATERIAL  SEE NOTE	ALL DIMENSIONS DISPLAYED ON THIS DRAWING ARE FOR REFERENCE ONLY	DRFT GMB DATE 09/29/88 APVD SCALE 1=1.0	DESCRIPTION NI10-P18SK-AZ3X2 55MM
FINISH	CONTACT TURCK FOR MORE INFORMATION	UNIT OF MEASUREMENT <b>INCH [ MILLIMETER ]</b>		IDENTIFICATION NO. T4351500
C UPDATE SPEC., NOTE, NEW FORMAT REV DESCRIPTION	IK 04/05/01 BY DATE ECO NO.	T4524	DO NOT SCALE THIS DRAWING	FILE: T4351500 SHEET 1 OF 1